

PLATE 3

CROSS SECTIONS A-A' AND B-B' WITH LOCATION MAP

ARTHUR LAKES LIBRARY
COLORADO SCHOOL of MINES
GOLDEN, COLORADO 80406

BRIAN G. HANSEN

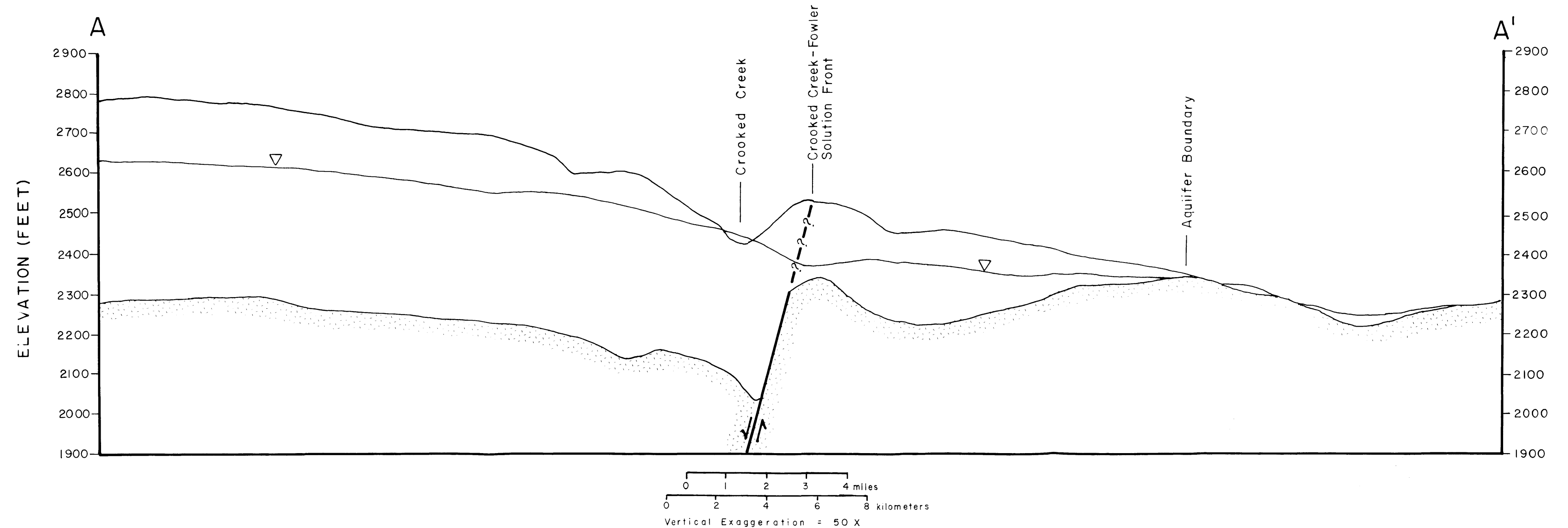
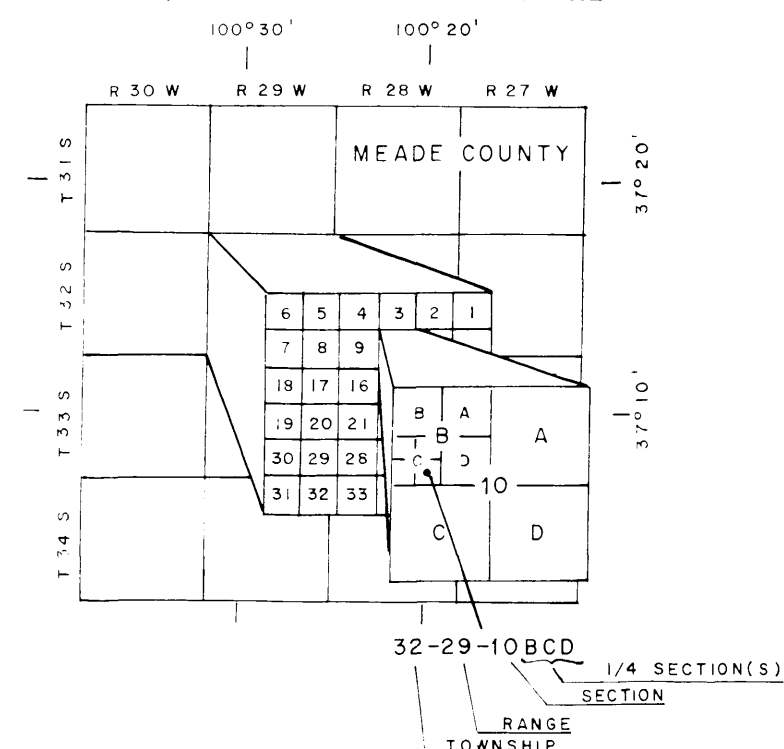
ER-3591



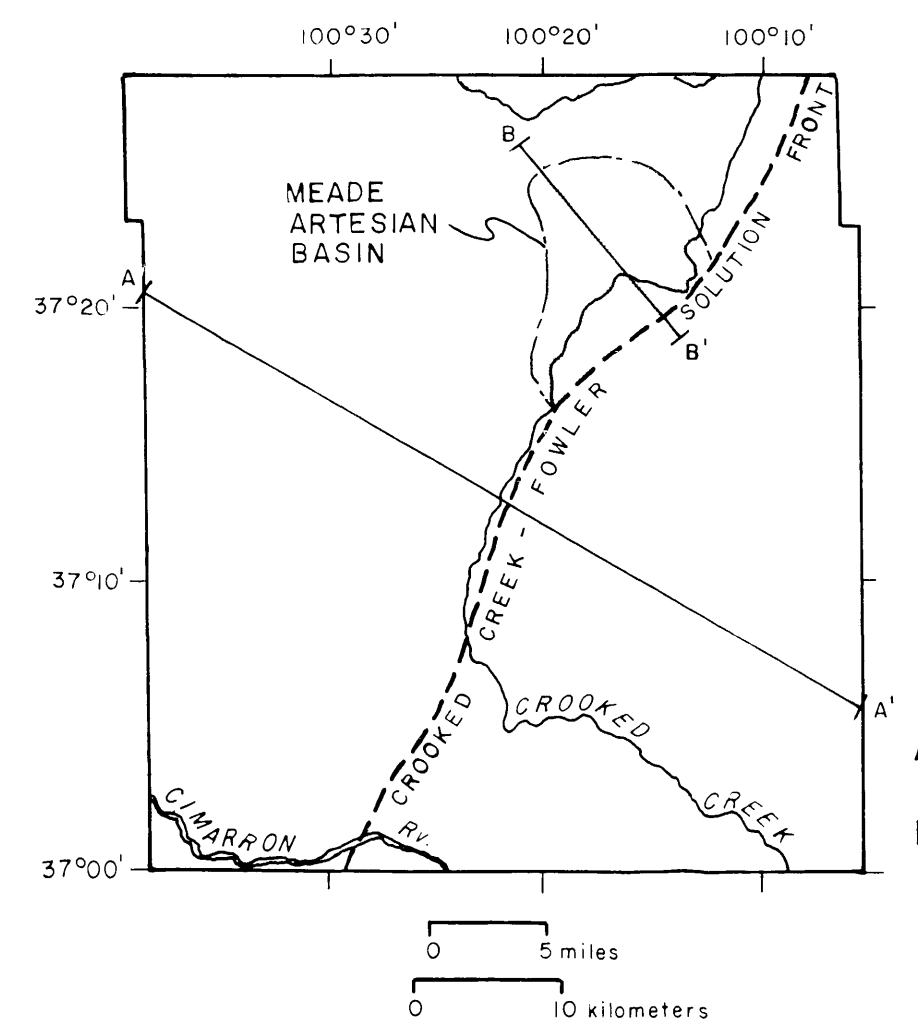
EXPLANATION

- Predevelopment (1940) potentiometric surface
- Equipotential line, head in feet. Contour interval 10 feet, National Geodetic Vertical Datum, 1929.
- Bedrock surface
- Solution Front, queried where existence is uncertain.
- Control point, with well number and elevation (in feet) of potentiometric surface in parentheses, dashed where projected.

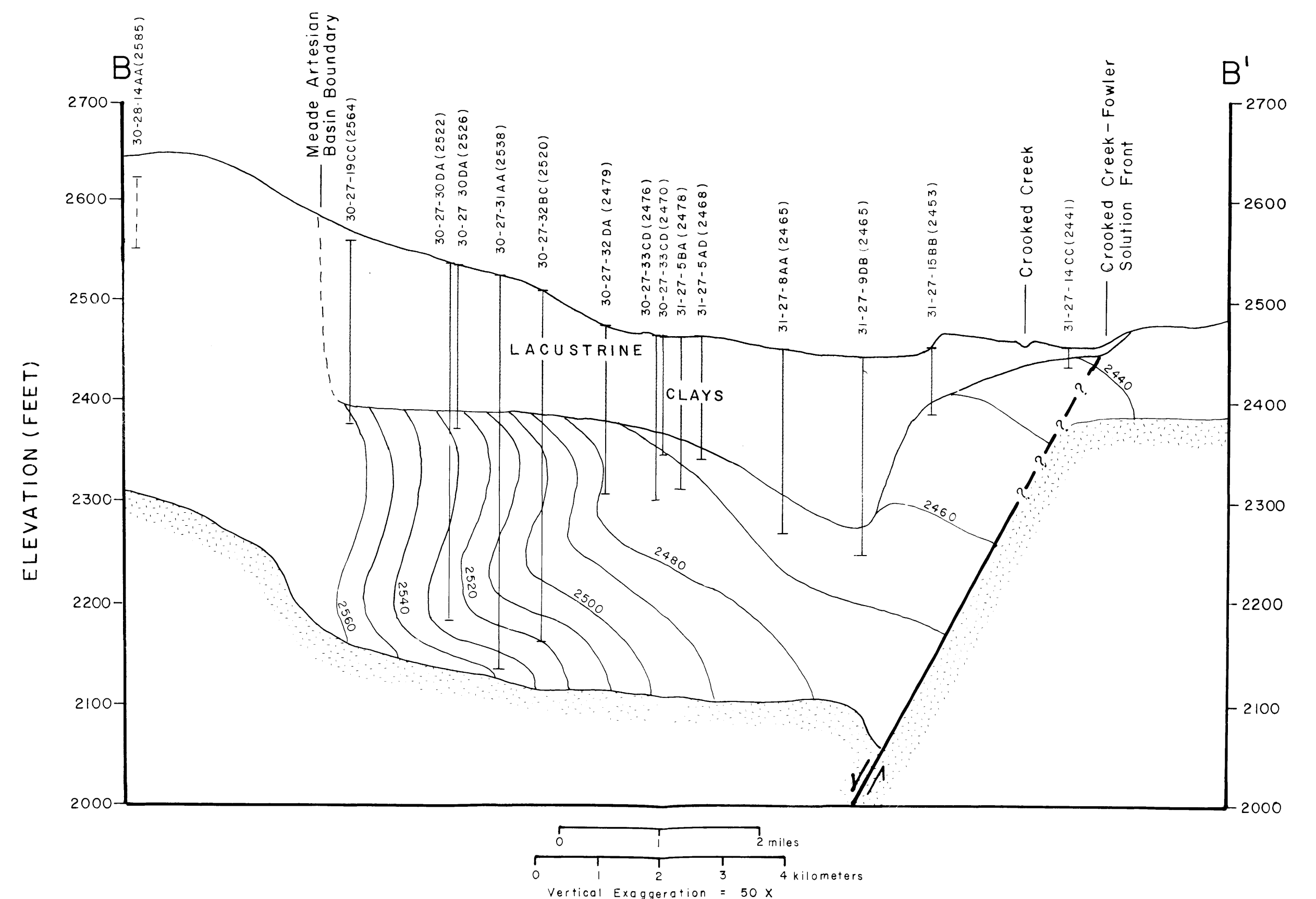
Well Numbering System



A-A' - GENERALIZED CROSS SECTION OF MEADE COUNTY, KANSAS
(SEE LOCATION MAP)



MEADE COUNTY, KANSAS SHOWING
LOCATION OF CROSS SECTIONS
A-A' and B-B'



B-B' - CROSS SECTION OF MEADE ARTESIAN BASIN
(SEE LOCATION MAP)