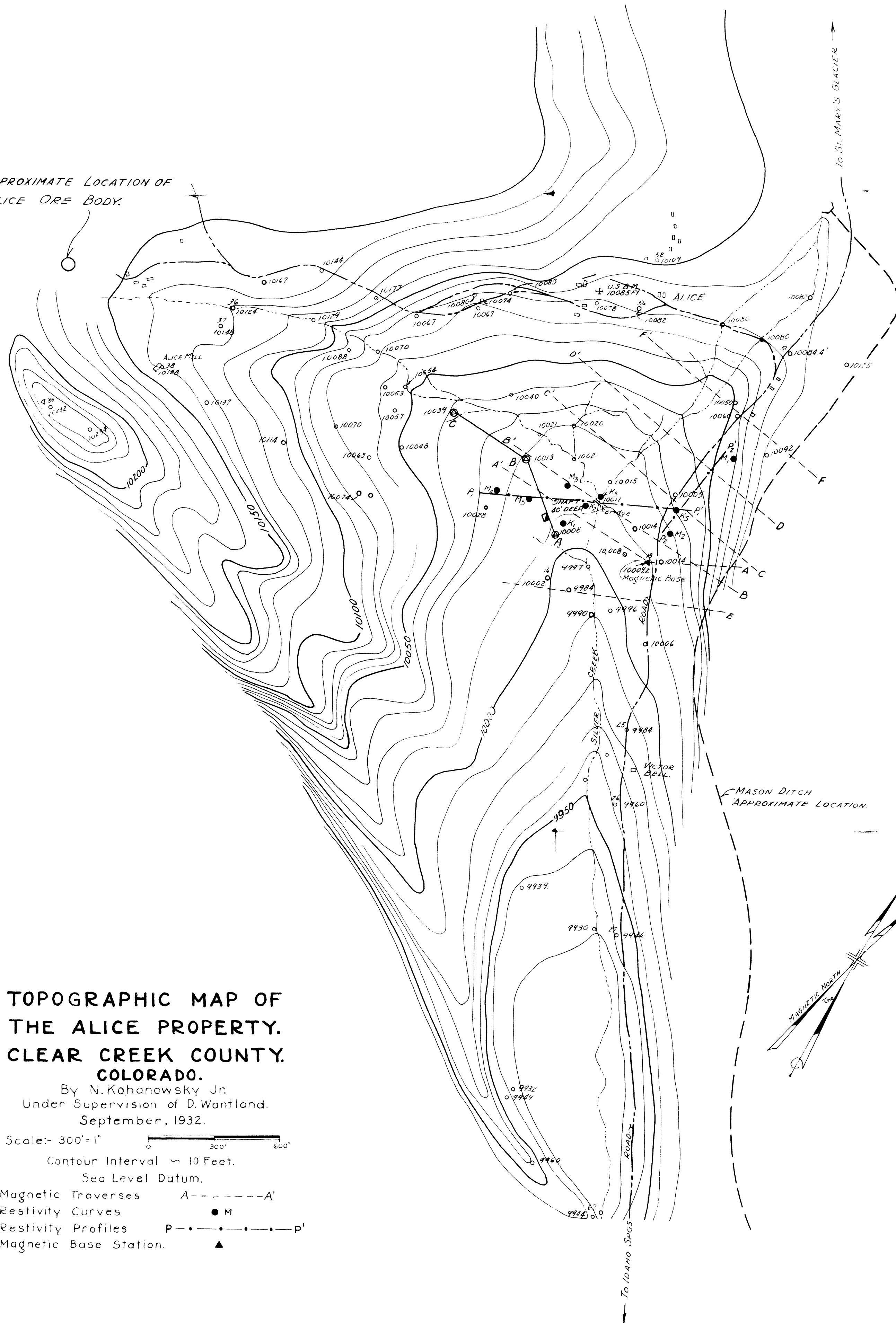


APPROXIMATE LOCATION OF  
ALICE ORE BODY.



# TOPOGRAPHIC MAP OF THE ALICE PROPERTY. CLEAR CREEK COUNTY. COLORADO.

By N. Kahanowsky Jr.  
Under Supervision of D. Wantland.  
September, 1932.

Scale: 300' = 1"

Contour Interval ~ 10 Feet.

Sea Level Datum.

Magnetic Traverses A-----A'  
Restivity Curves ● M  
Restivity Profiles P-----P'  
Magnetic Base Station. ▲